



**WAIPU
PRIMARY
SCHOOL**

Ph: 09 432 0135 Fax: 09 432 0809
Email: offic@wps.school.nz
Absences: Text 027 6126694
Website: www.wps.school.nz
WPS Bank details: 12-3099-0833144-00
Oscar Bank details: 12-3099-0833144-01



18th June 2020

Number 7

A HUGE Waipu welcome to Nicky Cole and his family.

These are this week's featured Advertisers. Please click on the logo to go directly to their contact information and website.



**WAIPU
MEDICAL CENTRE**
ACCIDENT AND MEDICAL

DR. H.S.L. MORRISON PHONE 09 432 1190



**NORTHPINE
GROWING
STRONGER**

Proud to support Waipu Primary School



Camp Waipu Cove

Beach front camping & cabins

Trampolines - 2 well equipped children's playgrounds - great fishing and diving on your doorstep - access to boat ramp (AWD required) - BBQ's - Beach front location

Phone: 09 432 0410 Email: info@campwaipucove.com
www.campwaipucove.com



goodGround[®]
REAL ESTATE LTD
Life's better here

3 The Centre, Waipu - 09 432 1077
www.goodground.co.nz
Licensed Real Estate Agent
(REAA 2008)



UPCOMING SCHOOL EVENTS

June 2020	July 2020
22 - Senior speech semi finals	1 - Waipu 150 Speech Finals
23 - Three way learning conversations - school finishes 12pm	3 - Last day of term 2
30 - Matariki celebration	20 - First day of term 3
30 - BOT meeting	
	August 2020
	3 - PTA meeting

PRINCIPAL'S MESSAGE

Kia ora koutou,

On Monday, I had the pleasure of sitting in on some of the senior classes' speeches. This is an annual event on the Waipu Primary School calendar and provides a wonderful opportunity for children to develop confidence in speaking publicly. The focus, as always, is on the Waipu District and there were many links some more indirect than others, to this theme.

The semi finals are next Monday and the finals are on the evening of 1 July, so come along and join us for this entertaining event.

The Ministry of Education has decreed that once a year, schools publish their "Concerns and Complaints" process. This is so that parents or community members are aware of the correct procedures to follow if they wish to raise a concern or issue that they may have with the school – be it with a student, staff member, the Principal or have an issue which is more general in nature.

Attached to this newsletter, you will find the process that is to be followed should you have a concern or complaint. Shortly, Waipu Primary School will have all school policies and procedures available on our website and this will be able to be accessed via a link to 'School Docs' on the home page of our website.

Nga mihi,

Julie

IMPORTANT INFORMATION

2020 Term Dates

The 2020 Term dates are as follows:

Term 1: 3 February - 9 April

Term 2: 28 April - 3 July

Term 3: 20 July - 25 September

Term 4: 12 October - 15 December

Three Way Learning Conversations (Interviews) Tuesday 23rd June - School finishes at 12pm

Our online booking system is now closed for three way learning conversations to be held next Tuesday 23rd June 2020.

School finishes at 12pm and interviews will begin at 1pm. Buses will run early. Oscar will be open for regulars and we can provide care for others until 2.30pm, provided you let us know in advance via the booking form.

Come along and discuss your child's progress so far this year.

Raincoats and Change of Clothes

As winter approaches and ground conditions become wet and muddy we encourage you to pack an extra change of clothes in your child's bag, along with a raincoat, especially for children walking out to the front gate at the end of the day. It's a long walk in wet and blustery weather.

School Pool Chocolate Fundraiser

We will be holding a Whittakers Chocolate Fundraiser at the end of this term, to raise funds for the repair of our school pool. Funds from this year's carnival were allocated to complete this project which will cost in excess of \$30,000. As you know, the Carnival was cancelled this year so we have been left to find other ways to fundraise.

If each child sells one box of chocolates or a maximum of 2 boxes per family, we will raise nearly \$10,000.00 which means we can get the school pool fixed before summer! We would really appreciate your help and support. If your family would like more boxes to sell over the holidays to be in the running for the top seller prizes, please call the office staff or send a note to school. There will be lots of awesome prizes up for grabs this year, three prizes for the top three sellers as well as loads of random weekly prize draws including:

2x Bikes

2x Scooters

Tablet

Bluetooth Speaker

Smart Tracker

Sports Balls

\$200 worth of vouchers (Movies, Pizza Barn, Flip Out)

Every box sold is an entry into the draw for these prizes! Look out for your box coming home the last week of term 2, just in time for holiday sales.

Matariki

During the last week of Term 2, we will celebrate Matariki. This is due to show up in our sky on 13th July which is during the school holidays. On Wednesday 1st July, we will celebrate with a whole school rotation of activities. These will be Māori games, waiata, crafts and many more.

One of our rotations will be sorting our gardens, as Matariki is a time to eat the last year's crops and plant more. We would appreciate some gardening experts to come and help on the day. If you are able to do so, please email alex@wps.school.nz.

Harakeke (Flax) Wanted...

Do you have any Harakeke (Flax) spare in your garden? If so, please bring to Matua Alex in Room 3 on Monday 29th June for weaving the following day (Tuesday 30th June).

Kids Club

Kids Club is starting in the Northpine Hall at 2.40pm on Friday 26th June 2020. The program will begin after school at 2.40pm and finish at 4.00pm pick up time for parents and caregivers. This will be a weekly program available every Friday with recess over the school holidays.

Kids Club is similar to the Life Choices programme that was available at the school on Thursday mornings. The program is Christian based and focuses on ethics, values and making good life choices.

Some of the teachers who were involved in teaching the Life Choices program are responsible for Kids Club. This is not part of the school curriculum therefore it is not run during school time. Kids Club offers parents, who want some Christian based teaching for their children, that choice.

If you have any questions or queries please contact Joseph Pyle on 021 050 9013 or joseph_pyle@hotmail.com

Smart Labels NZ Ltd

smartlabelsnz@gmail.com
www.smartlabelsnz.co.nz



Support Waipu Primary

How many times has your child come home without an item of clothing and then it is lost forever? Here is a fundraiser that will help you as well as help Waipu Primary School. For every purchase of the items shown below our school will get 30% returned back. This is for the 25 pack of Small and Medium sized labels.

Purchase iron-on labels to name your child's clothing from Smart Labels NZ and you are not only supporting our school, you are supporting a small NZ Business and saving yourself from having to replace lost items.

To order your labels and support the school, follow the below instructions. By using the coupon code **WAIPU** the sale is identified as our school and the 30% will be automatically donated back to the school.

HOW TO ORDER YOUR LABELS

1. Select the labels you wish to order. This fundraiser relates to the below two label options.
2. At the time of checkout, you will reach the basket screen. Here is where you will enter the coupon code **WAIPU**
3. Follow the rest of the checkout instructions to purchase your labels. Please note that payments are required via Internet Banking (Direct Deposit) as shown in the screen show below.

All our iron-on labels are printed on a white tape with a black font to ensure they are easily read.

See the below screenshot which indicates where you will see the coupon code option at your time of checkout.

[View the Website](#)



Medium Label 40mm x 15mm

Dispatched with instructions on how to apply the labels and iron-on protective paper. Robust durable labels to ensure your clothing is returned home.

These labels come on a tape and you cut as required.

[25 Pack Medium-Iron-On Label 40mmx15mm](#)

Small Label 12mm x 46mm

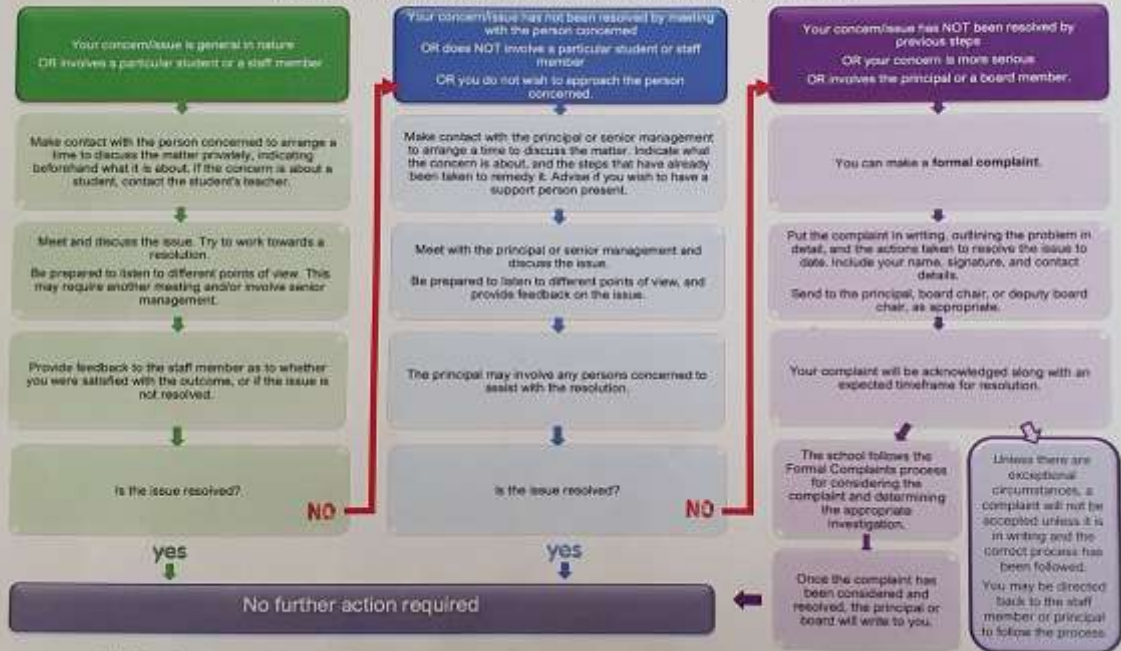
Dispatched with instructions on how to apply the labels and iron-on protective paper. Robust durable labels to ensure your clothing is returned home.

These labels come individually pre-cut.

[25 Pack Small-Iron-On Label 12mmx46mm](#)

Concerns and Complaints Process

Most concerns can be resolved informally by discussions with the people concerned.



This flowchart aligns with the school's Concerns and Complaints policy and procedures.

Date	Hub Location – Option 1	Hub Location – Option 2	Hub location – Option 3	Time
10/6/20	Paparoa Primary School, 14 Franklin Rd, Paparoa	Barnados, 2 Armstrong Avenue, Maunu	Mangakahia Community Room, Mangakahia Road, Titoki	9:00am – 12:00pm
11/6/20	Tikipunga Baptist Church, Kiripaka Rd & Heretaunga St, Tikipunga	Arapohue School, Arapohue		9:00am – 12:00pm
17/6/20	Ruakaka School, 12 Sandford Rd, Ruakaka	Clark Road Chapel, 4-6 Clark Rd, Kamo, Whangarei	Back 2 Basics, Maungatapere	9:00am – 12:00pm
18/6/20	Ngunguru Sports Cub, Kopipi Crescent, Ngunguru	Dargaville Intermediate School, 38 Charlotte St, Dargaville	Onerahi Community Hall, Onerahi, Whangarei	9:00am – 12:00pm
24/6/20	Maungaturoto Primary School, 8 Gorge Rd, Maungaturoto	Tikipunga Baptist Church, Kiripaka Rd & Heretaunga St, Tikipunga		9:00am – 12:00pm
25/6/20	Barnados, 2 Armstrong Avenue, Maunu			9:00am – 12:00pm
2/7/20	Barnados, 2 Armstrong Avenue, Maunu	Presbyterian Church - Dargaville, 78 Normanby Street, Dargaville		9:00am – 12:00pm

Drop into the hub or contact us on 0800 5248 4256 or email TT.Support@education.govt.nz

YOU'RE INVITED TO A
TOTALLY AWESOME

DISCO

Glow

KIDS PARTY

FRIDAY 19TH JUNE

5:00PM TO 7:00PM

\$2 ENTRY FEE

FOOD & DRINK
GLOW STICKS
(EFTPOS AVAILABLE)
PRIZES TO BE
WON

DON'T FORGET TO
WEAR WHITE OR
NEON COLORS

FUNDRAISER FOR Yr5 Camp

ALL WELCOME (Parent supervision of children)

Location - Northpine Hall, Waipu Primary School

CONGRATULATIONS!

Principal's Special Awards

Congratulations to the following students for an excellent effort in demonstrating our PB4L value in **weeks 8 and 9**. Our **PB4L Value** in **Week 8 and week 9** was **Kindness**.

Room 1 – Jaylen Carson, -----

Room 2 – Phoenix Butcher, -----

Room 3 – Ewen Pentz, -----

Room 4 – Annabel Gammage, -----

Room 6 – Charlie Comery, Neko McAulay

Room 7 – Heath Camson, Van Jones

Room 8 – Mackenzie Wheeler, Kyla Pollock

Room 9 – Clara Chaves, Zoe Graham

Room 10 – Tane Anderson, Michell Donn

Room 11 – Olive Jones, Ella Green

Workshop - Stella Campbell, -----

A huge thank you to:



A huge thank you to Four Winds Foundation for funding \$9,000.00 towards 20 iPads for the Junior school.

WAIPU PRIMARY SCHOOL NEWS

Beeswax Wraps For Sale

We have our very own Waipu Beeswax wraps for sale, designed and created by Waipu Primary School students. These wraps have been made using local beeswax and can be reused over and over. Beeswax wraps are an eco-friendly alternative to single use plastic and are a zero waste item. They are available at the office for \$15 per pack of 3, (2 medium and 1 large wrap per pack). Each pack contains a mixture of the fantastic colourful designs.

BITS 'N' BOBS

Bagpipe and Drum Lessons

are available with members of the Waipu Pipeband.

Please contact Margo Finlayson to sign up or find out more about it.

Phone 0274343603

Tutoring Service

Registered teacher available for 1-1 tutoring in literacy and numeracy - specialising in Learning Difficulties

Call/Text Kathy Ph: 021 058 6920 Email: kathy.menzies@outlook.com

Piano/Keyboard Lessons 2020

For those of you keen to start, or continue lessons this year, I will be coming in to school again on Tuesdays. All enquiries welcome. My contact numbers are 4320680, or 021 0343557. All the best, Janeen Soderling.

Circool Circus

Friday classes, Coronation Hall, Waipu Primary students 3.15pm - 4.15pm

Secondary students 4.30pm - 5.30pm

Enquiries Achmed 02102777294

REGULAR UPDATES

Newsletter Content

If you want to advertise any events/items in the newsletter, please email Julie Turner at principal@wps.school.nz. If you want to take up a paid spot let Cindy know - cindy@wps.school.nz.

Office Payments

Only small cash payments for lunches/mufti days are taken through classrooms. Any large cash payments are to be made directly to the office by parents please. We now have EFTPOS available for your convenience (credit card payment fees apply). Please refer to the accounts below for Internet banking, bearing in mind there are different accounts for different payments.

Waipu Primary School BOT: 12-3099-0833144-00 (Fees, donations, camps, trips, chocolate fundraiser, scholastic books, **NO OSCAR payments please**)

Waipu Primary School OSCAR: 12-3099-0833144-01 (**OSCAR payments ONLY please**)

Waipu Primary School PTA: 12-3115-0143849-00 (Second hand uniforms and calendar money)

USEFUL CONTACTS

Buses

Any bus issues should be reported to Jordan McDonald either directly (jordan@wps.school.nz) or via the school office. Please complete the paperwork provided by the office staff to record your issue/complaint.

Uniform Sales

Second hand uniforms are available from Kylie Jacoby. Phone Kylie on 02102693876 to see what she has available. If you have a uniform you do not need, please consider giving this to Kylie as the money from second hand clothing comes back to the school.

The uniforms are held at school but you need to arrange a time with Kylie to view on Wednesdays between 8:00am and 9:30am.



FRESHA VALLEY WAIPU LTD
50 ST MARYS RD, WAIPU,
TEL: 09 432 0142
FAX: 09 432 0080
Proudly supporting Waipu
Primary School

CREWCUT
LAWN & GARDEN

Crewcut has exactly the lawn and garden service you need.
0800 800 286



53 The Centre, Waipu
Ph 09 432 0693
For all your animal needs



Kids 1st
Childcare & Learning Centre Ltd

Childcare and
Learning Centre Ltd
44 The Braigh, Waipu
Ph: 09 432 1411
Email:
kids1st@xtra.co.nz

LAWSON
CARTAGE

SITE EARTHWORKS
TOPSOIL SHAVING AND
CHIP

Tip Trucks & Trailer, Hiab, 12 & 20 ton Diggers,
Grader, Skiddy 3.5 ton Roller

FOR ALL YOUR
EARTHWORKS
& CARTAGE NEEDS

Ph/Fax 09 432 8418 or 021 768 940

STEEL ART NZ

Cindy Hughes
Steel Art NZ is made in New Zealand

Phone—021 202 1805
Facebook—Steel Art NZ
Email: steelartnz@gmail.com



WAIPU TREE CARE

Rob Dawson - Qualified Arborist

0210 229 2959 • rob@waiputreecare.co.nz

waiputreecare.co.nz

Ph: 09 432 0123
breambayglass@gmail.com

BREAM BAY GLASS
FOR ALL YOUR GLASS NEEDS



KidsLink
connecting schools & parents with trusted services for kids & teens

Learning | Referrals | Physical Needs | Extra Curricular | Clubs and

KIDS & TEENS

Who is out there?
What do they do?
How can they help?

www.kidslink.co.nz

Mike Whittaker
MORTGAGES

Home Loans - Refinancing - Rate Fixing - First Home Buyers - Investment Property

Phone 0800 579 324

Bream Bay Painting
specialising in high quality interiors & exteriors

FREE PHONE: 0800 858 858
MOBILE: 021 487 835
www.breambaypainting.co.nz

CREATIVE PLUMBING
Plumbing your Community

CREATIVE PLUMBING LIMITED
phone: 0508 273 284
PO Box 93, Waipu
www.creativeplumbing.co.nz

marcus jones
BUILDERS LTD

For all aspects of Building.

Licensed Building Practitioner - Qualified Tradesmen Carpenter

marcusjonesbuilders.com

mobile: 0274 320 007
phone: 09 432 0081 a/h
email: mjonesee@hotmail.com

Selling Bream Bay
Waipu Real Estate

7 The Centre, Waipu
PH 09 432 4000
www.waipurealestate.co.nz

SUMPTER BAUGHEN
Chartered Accountants

17 The Centre, Waipu
Whangarei
Kerikeri
Ruawai
09 432 0046
www.sumpters.co.nz

MILK BAR
easy for you, healthy for them

Making rearing easier!
0800 104 119
www.milkbar.co.nz

Many thanks to the above advertisers for supporting our school. Please click on their logo to go directly to their website.